



Department  
for Education

# “Broadening Educational Pathways” scheme:

Targeted access for Looked After and  
Vulnerable Children to independent  
schools’ bursary award schemes

HMC briefing



# Today's objectives

We hope to gather:

- An understanding of schools' interest/concerns re. LAVC placements
- Your commitment to the values underpinning a pledge to prioritise LAVC in your bursary award schemes



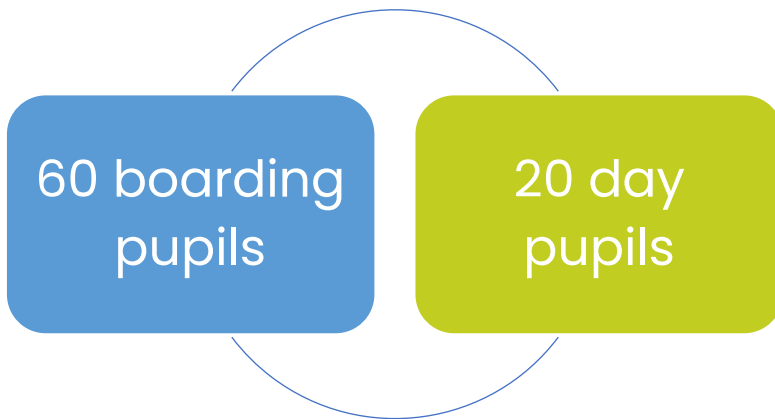
# What is the BEP scheme?

- Department for Education contract: “what would it take to significantly scale the # LAC/CIN accessing an independent school education” (boarding and day)
- Phase I 2020–22. 150 schools engaged. 80 pupils placed.
- → Independent Review into Children’s Social Care recommendation
- → Phase II 2022–23 – further exploration of barriers to massive scaling prospects
- Post 2023?.... Exit, Plateau, Massive Scaling



# BEP implementation so far.

## In 2 years...



### Boarding

- Children Looked After (in foster or kinship care arrangements)
- Unaccompanied Asylum-Seeking Children (UASC)
- Child-Protection Plan (CPP)
- Child-in-Need Plan (CiN)
- Young Carers

### Day

- Children Looked After (in foster or kinship care)



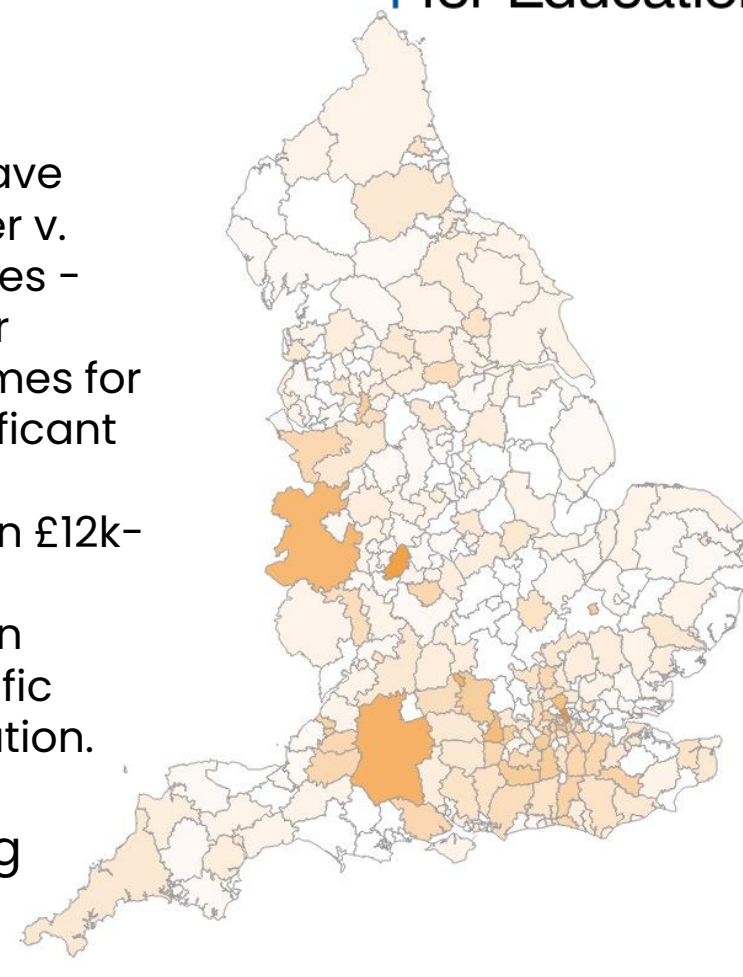
# How it works in practice...

RNCSF have been commissioned by the Department to:

- equip Local Authorities with the knowledge of respective schools to 'match' young people – right school for right child
- broker school places – ensure places offered at very low cost and in environments that really understand what it takes to support vulnerable young people to thrive,
- monitor the progress of all young people throughout the preparation, transitional period and time in schools
- assess the impact of those placements in order to increase referral activity and make case for targeting of bursary schemes, and LA commissioning power.

150 schools have agreed to offer v. low-cost places – targeting their bursary schemes for LAC with significant subsidies worth between £12k-£40k p/a (depending on schools' specific financial situation).

Representing nation-wide reach:



Royal National Children's SpringBoard  
Foundation: Affiliated Schools

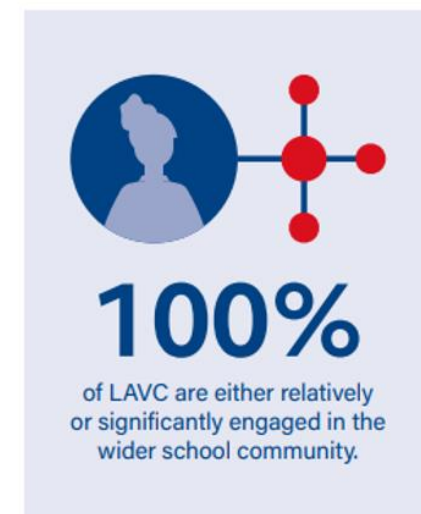
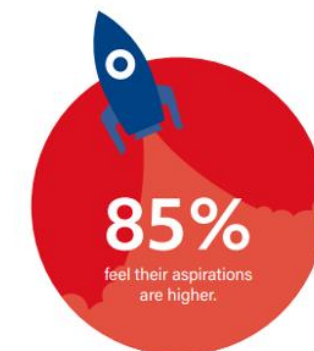
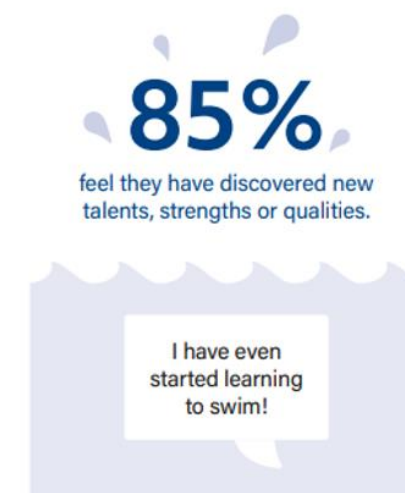
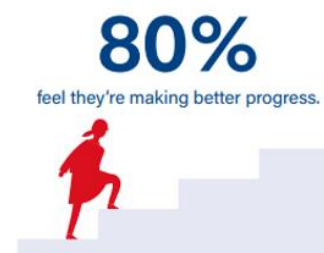
# Impact Evidence



Department  
for Education

## Outcomes:

- a 95% retention rate
- 59% of LAVC SpringBoarders gaining five or more A\*-C grades at GCSE (compared to <35% of CIN)
- average Attainment 8 score of 57.5 (comparator of 31.3)
- 93% of LAVC SpringBoarders achieving 2 A-levels (or equivalents) at KS5
- Measurable shifts in the young people's wellbeing and life skills: across areas of resilience, trust in self, trust in others and feelings of self-worth



# Leading to policy change



Department  
for Education

## Independent Review into Children's Social Care 2022

**"If private education exists then it should be equally accessed by those who face the greatest educational obstacles.** Local Authorities should be better equipped to identify children likely to thrive in these settings, and to better leverage the opportunities that independent & boarding schools offer....

... The DfE has funded a programme to explore value of more central coordination, matching and placing of children into boarding (state and independent) and independent day schools, and the results thus far have been positive - demonstrating an appetite from the independent sector as well as widening the pool of children in care accessing these opportunities.

**"We should all remember that we are these children's parents. And as those corporate parents we want the best for our children. We should be the pushiest of all parents and for some of those children an independent school is the best pathway for them."**

**Local Authority *Virtual School Head***

# What next?

---



Department  
for Education

- June 2022: Government launch of Phase II: have until February to agree how to scale to **a nationwide solution providing access to the best schools for our most vulnerable children.**
- From c.150 pupils to 4 or 5 x that amount (modelling suggests c. 700–800 LAC/CIN at Yr7/Yr12 entry each year).
- Barriers to achieving this – supply of places, demand from LAs, 'broker' model to ensure matching of right child to the right school

**Is the 3 year pilot going to have been an interesting 'proof of concept' or creating a paradigm shift?**



# Questions for HMC Heads:

---

- What scope is there for the sector to work as a whole to publicly commit to taking a pledge that consideration of LAC/CIN should come first in any bursary schemes?
- What concerns do you have about taking such a pledge?
- What question have we not asked that you think might be important in winning hearts and minds on this issue more broadly in the independent sector?